

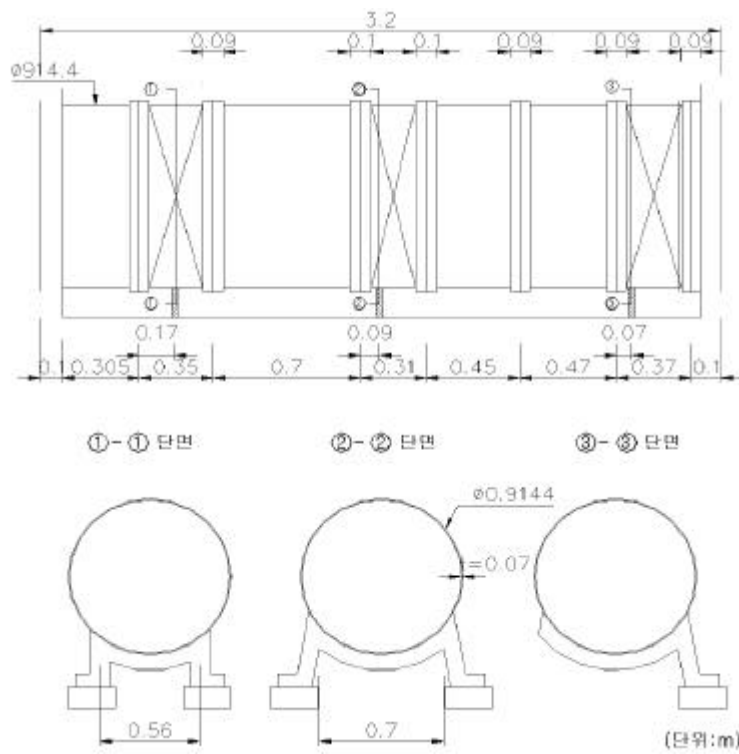
가

가, 가,
가

(가)

가 (130mm)

가



< 1 >

(: m)

< 1> 가

	, c (t/m^3)	2.30
	, c	0.18
	, E_c (t/m^2)	1,575,170
	, c_k (t/m^2)	1,400
	, sp (t/m^3)	7.85
	, sp	0.3
	, E_{sp} (t/m^2)	20,400,000
	(t/m^2)	13,667
	, t_{sp} (m)	0.0095
	, c_i (t/m^3)	7.34
	, t_{ci} (m)	0.022
	, c_i	0.3
	, E_{ci} (t/m^2)	12,700,000
	(t/m^2)	14,000
	, (t/m^3)	1.9
	,	30°
	, w (t/m^3)	1.0

+

+

,

+

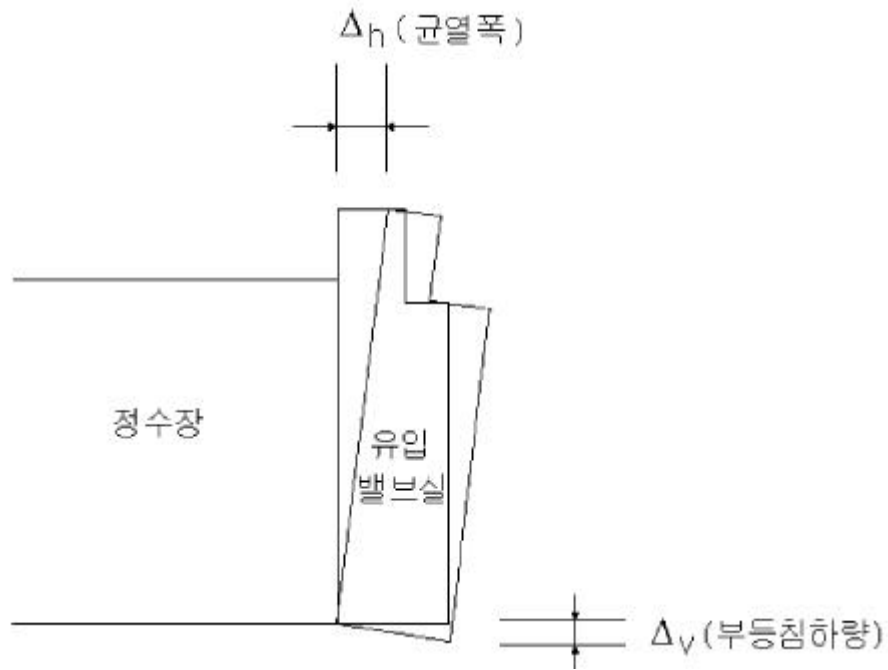
.

h

= 0.13 m

v = -0.06144 m

.



< 2> 가 1

< 2> 가

(ton)		52.163	
		25.01	
,	H (m)	H = 7.10, H _o = 0	
	L (t/m ²)	L = 6.745	
		K _p = 3.0	
	H (m)	H = 7.10, H _o = 0	
	L (t/m ²)	L = 40.47	

가 1

3

-

가 180 ,

가

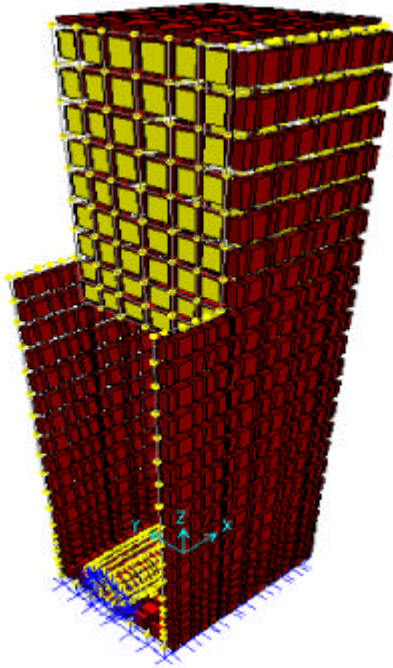
286 ,

가 816 ,

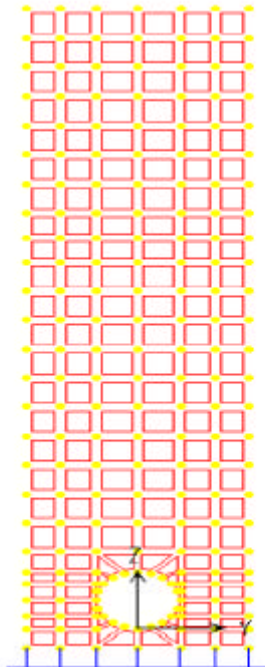
가 770

2,052 .

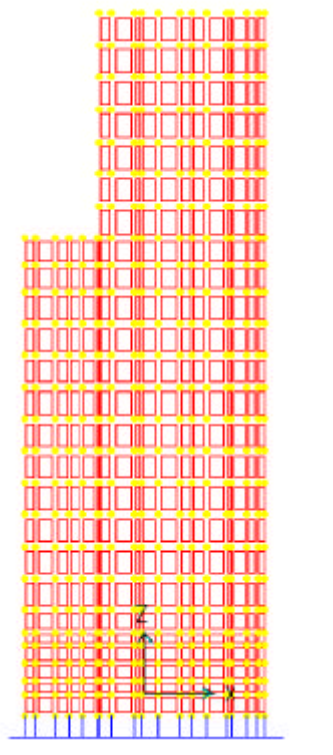
2,076 .



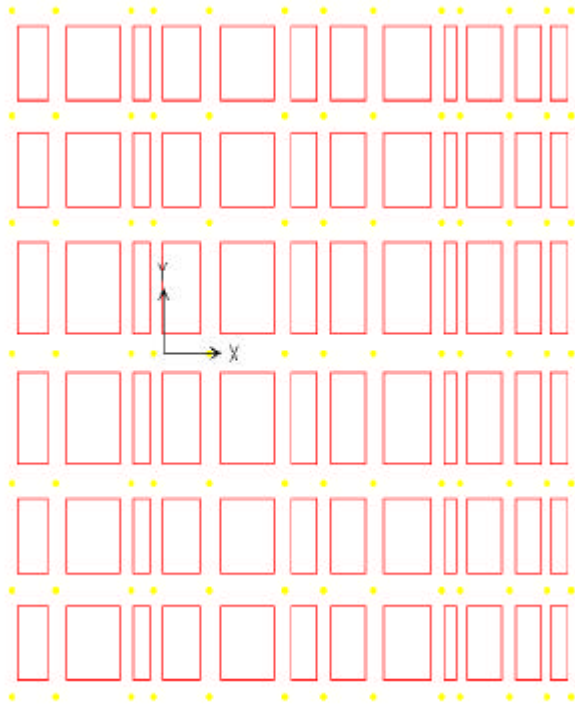
< 3> 가



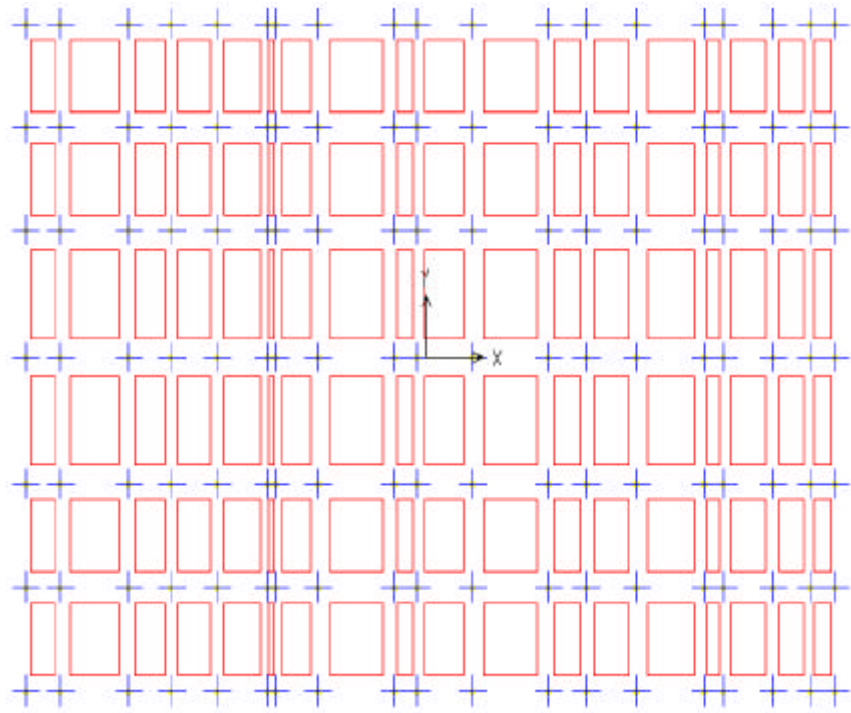
< 4> 가



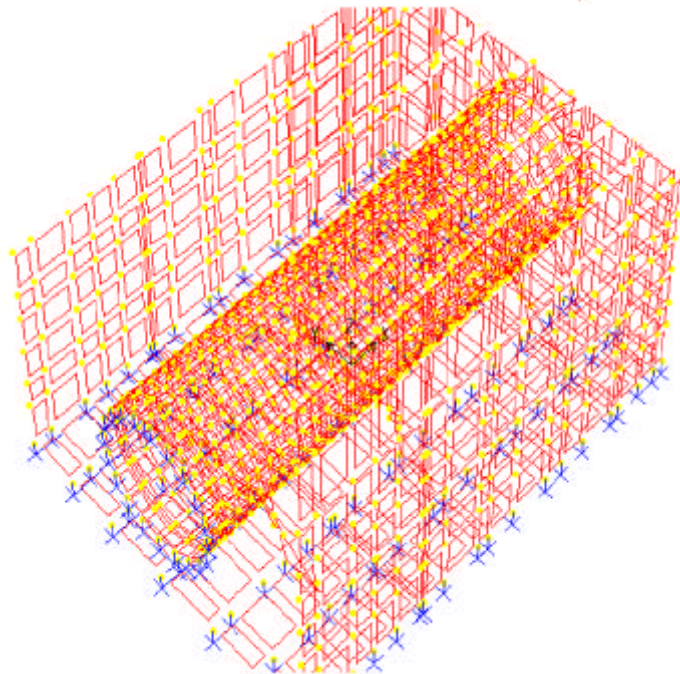
< 5> 가



< 6> 가



< 7> 가



< 8> 가



< 9> 가

-

< 10> Z A B

$$k_H = k_{HO} \left(\frac{B_H}{30} \right) - 0.75 \quad < 1 >$$

kH : (kg/cm³)
 kHO : 30 cm

$$k_{HO} = \frac{1}{30} E_o \quad < 2 >$$

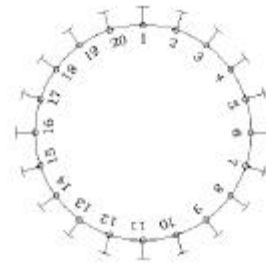
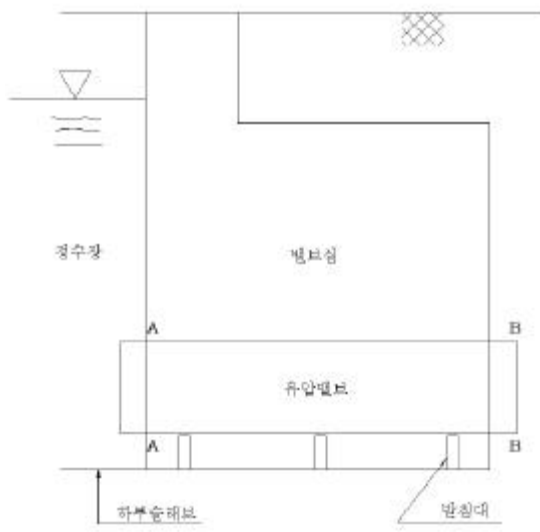
Eo
 BH :

(cm).

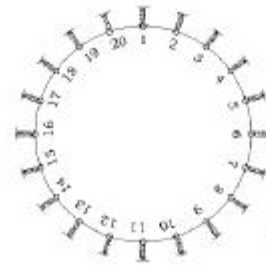
$$BH = \sqrt{A_H},$$

, AH

(cm²).



고정판 A-A 단면



만정스프링 B-B 단면

< 10 > 가

1

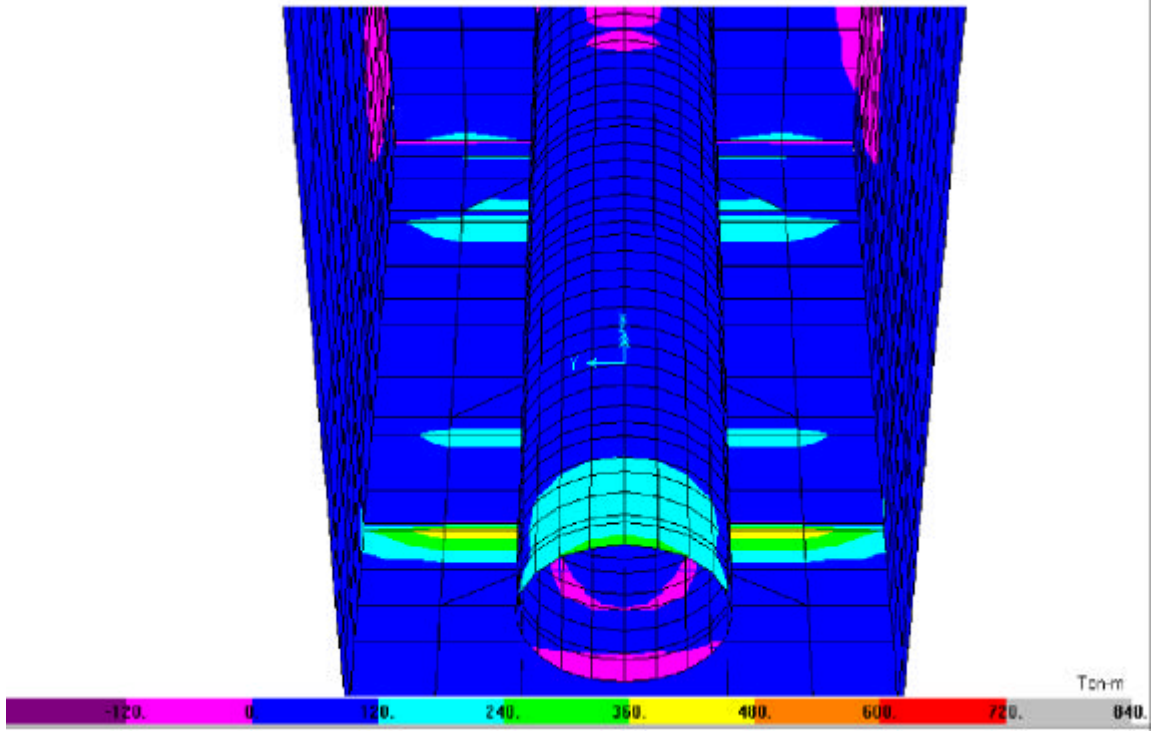
10

(STW 41)

(KSD 4311)

3

가



< 11> 가

가

가

가

가

H-Pile

가

가

가

,

, H-Pile