

# (SEM)

(Scanning Electron Microscope : SEM) 가

2

(象)

가

(EDS)

가 가

## SEM

1

SEM

( )

(2 )

( )

10nm

CRT

1

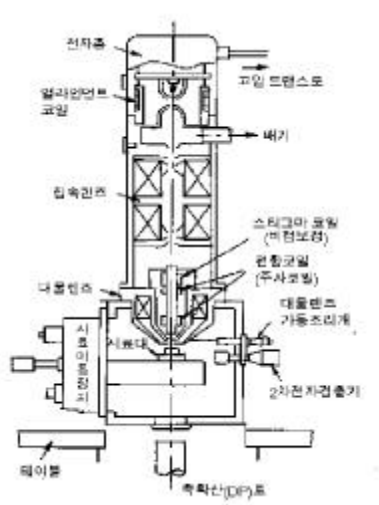
2

가

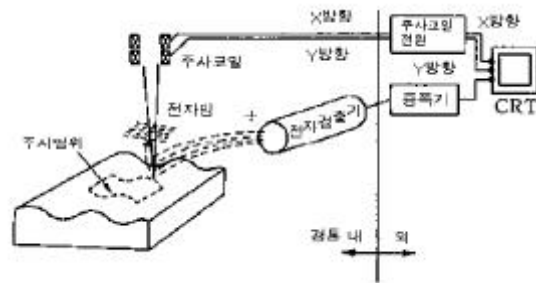
2

2

CRT



1. SEM



2. SEM

SEM

15 × 15mm

가

가

SEM

SEM

1

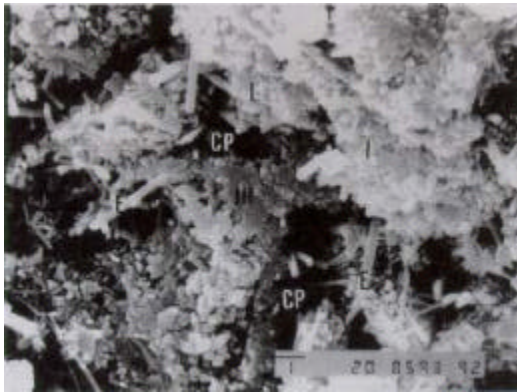
C-S-H( )

, CP

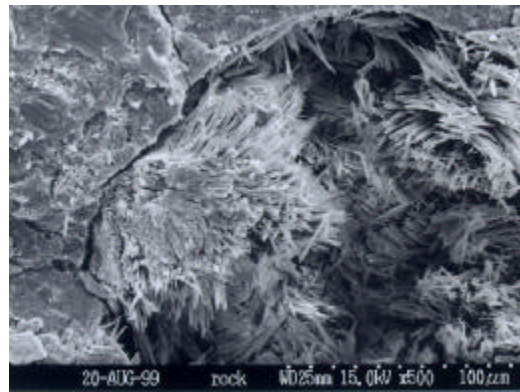
, 2

가

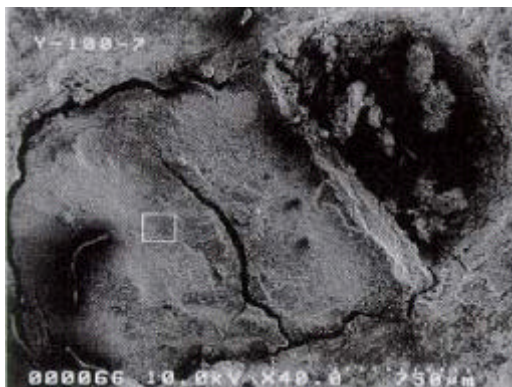
3



1.

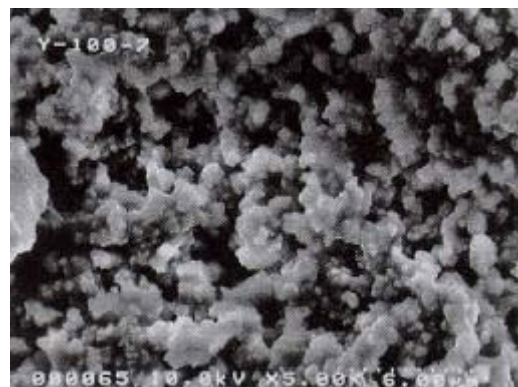


2. DEF



3(a)

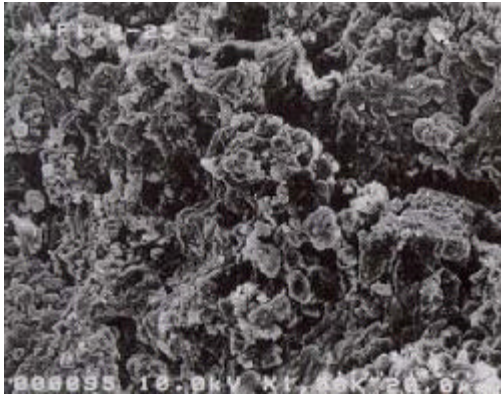
(×40)



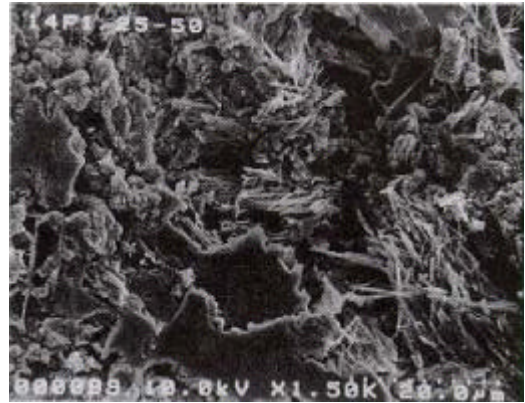
3(b) 6.3(a)

SEM (×5,000)

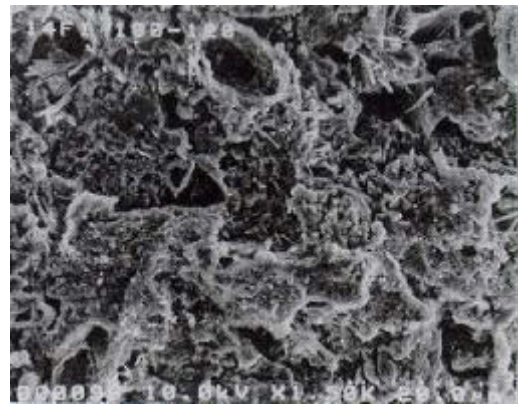
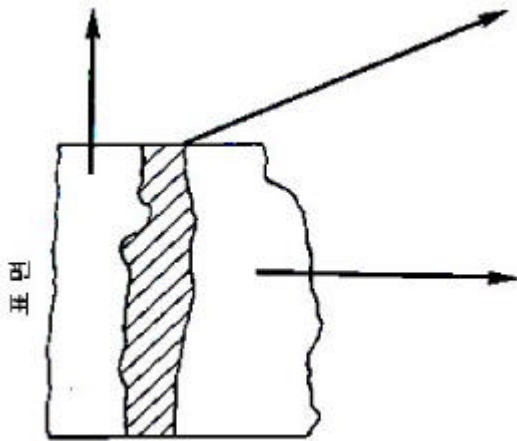
C-S-H 가  
가 가



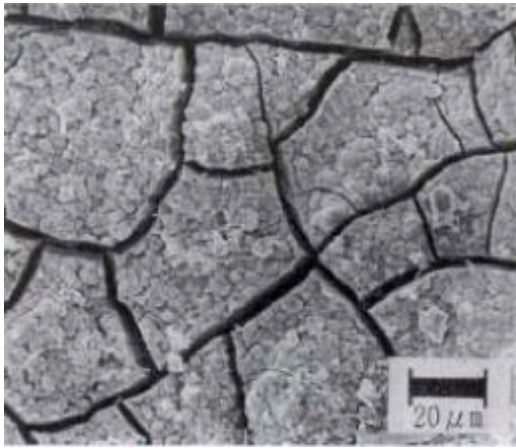
4(a)  
(× 1,500)



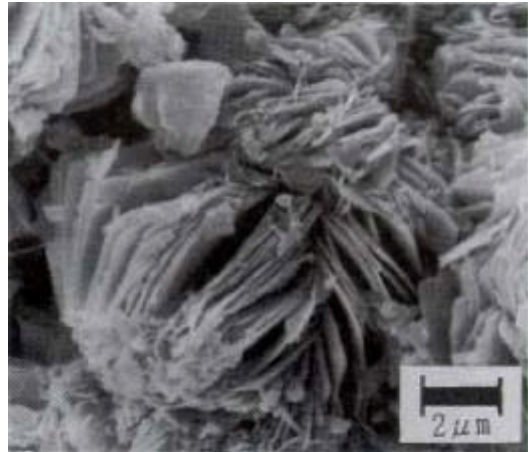
4(b)  
가 (× 1,500)



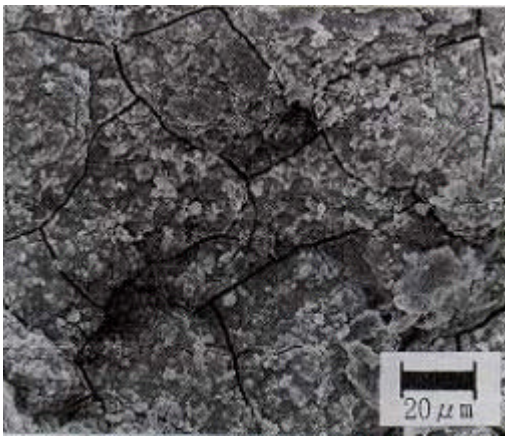
4(c) (× 1,500)



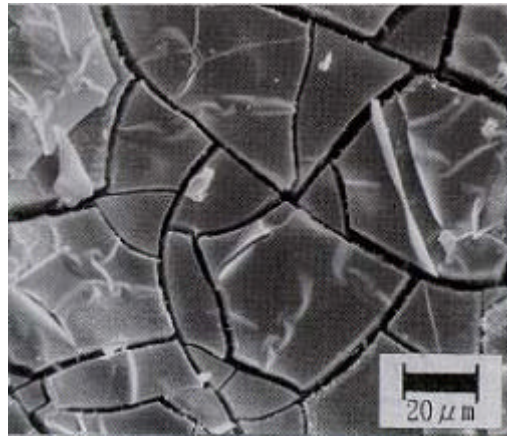
5. - - (1)



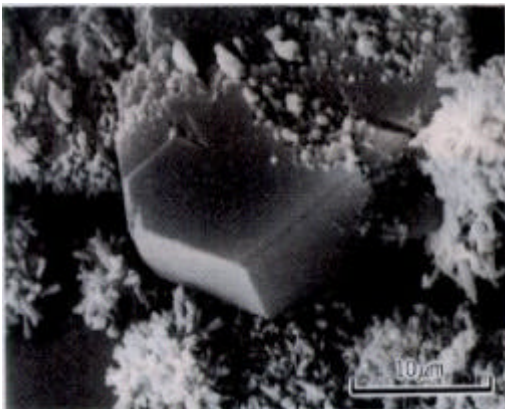
6. - - (2)



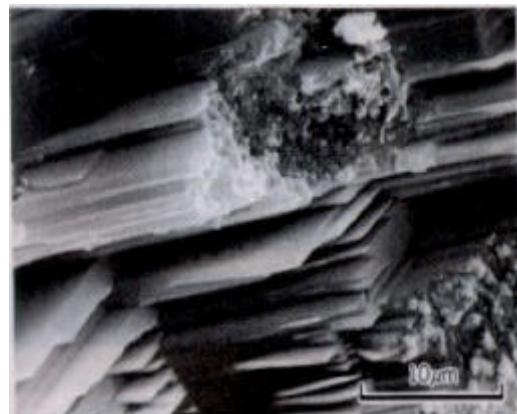
7. - - (3)



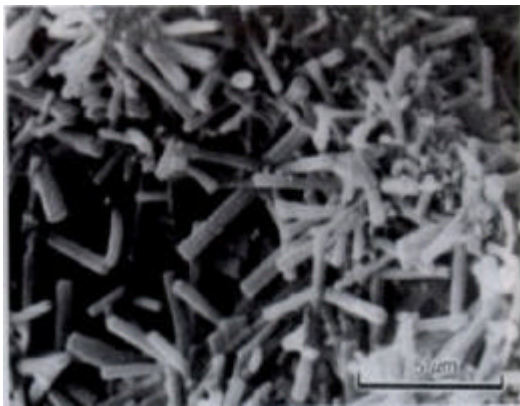
8. -



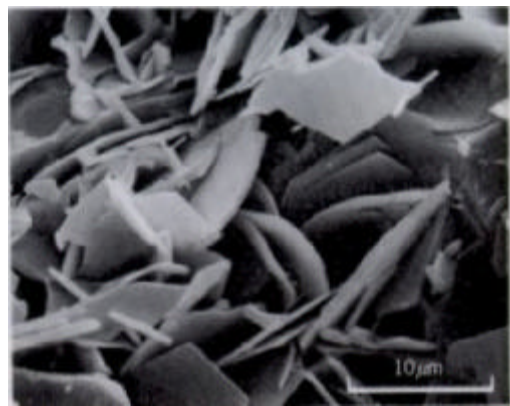
9.  $\text{Ca(OH)}_2$



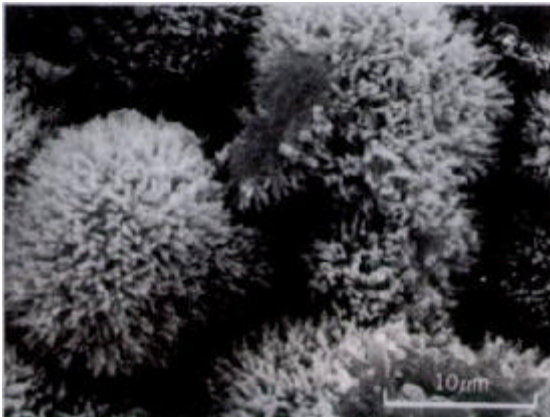
10.  $\text{Ca(OH)}_2$



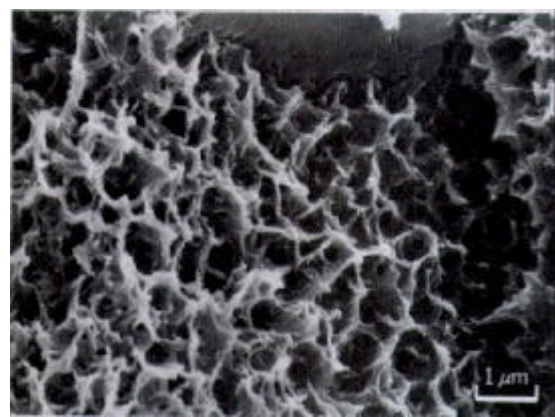
11. 가



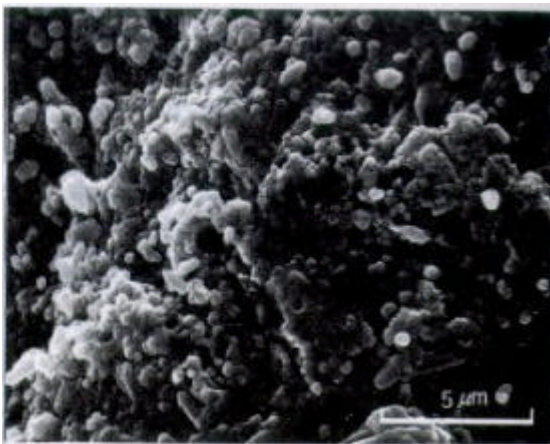
12.



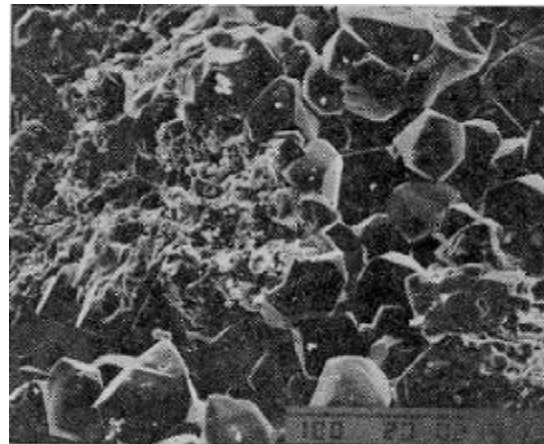
13. Type C-S-H



14. Type C-S-H



15. Type C-S-H



16.