

(GPR, Ground Penetrating Radar)

GPR

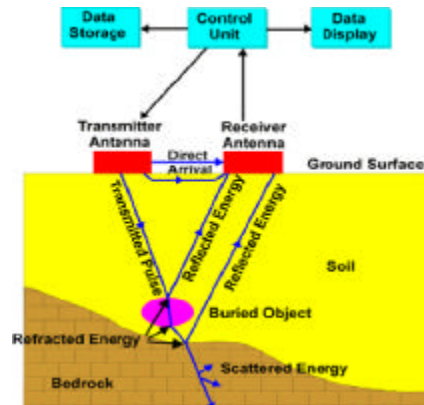
100MHz
 pulse EKKO 100 system 100MHz
 pulse EKKO 1000 system . GPR 가
 가 가



< 1> pulse EKKO 1000

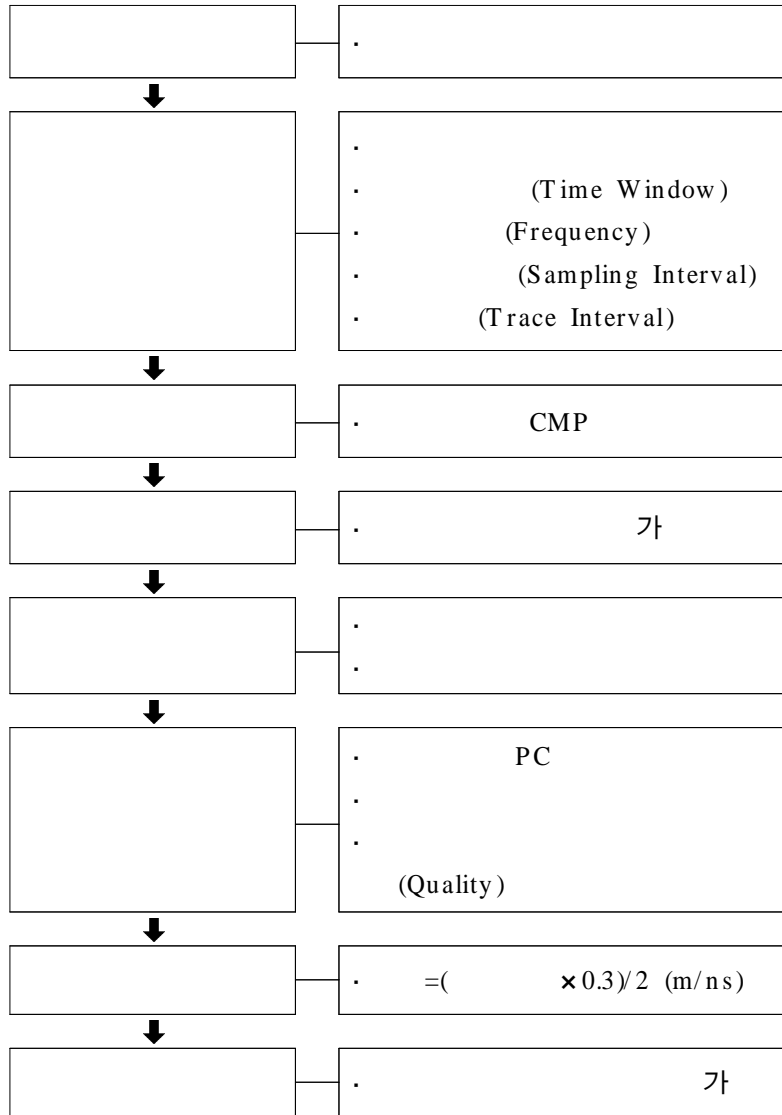


< 2> pulse EKKO 100



profiling

< 3> GPR



가

GPR

(Two-Way Travel Time)
(Depth)

()

$$D = \frac{1}{2} \cdot V \cdot T$$

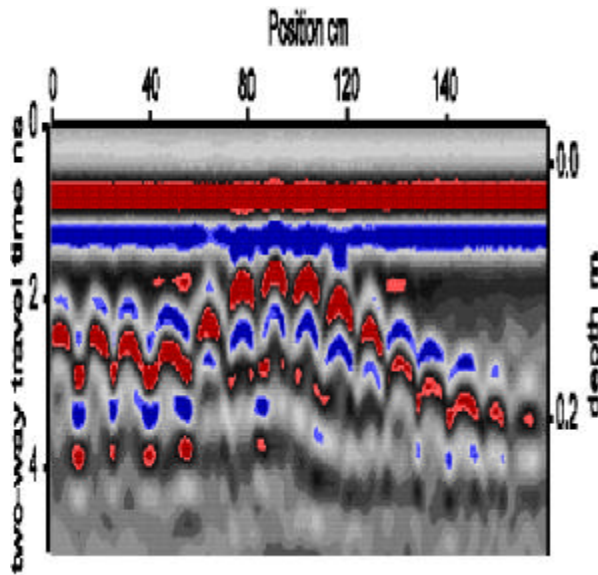
$$V = \frac{c}{\sqrt{r}}$$

, D = , T = , c = (0.3m/nsec), r =

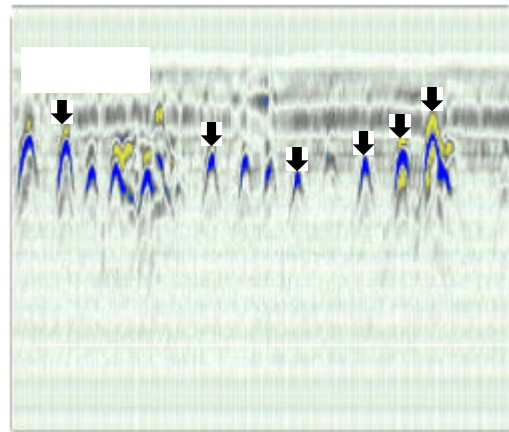
가

(Image)

(Image)

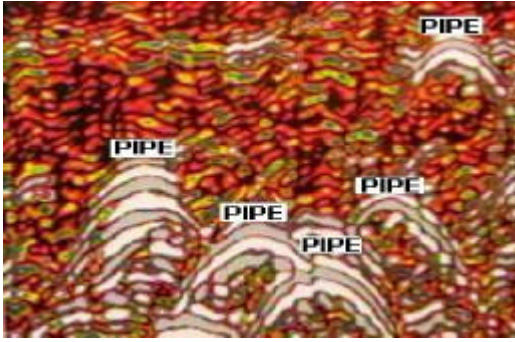


< 4 >

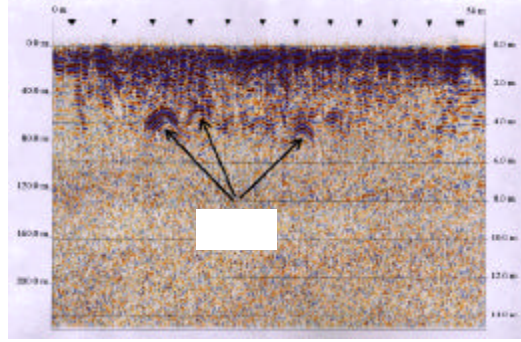


< 5 >

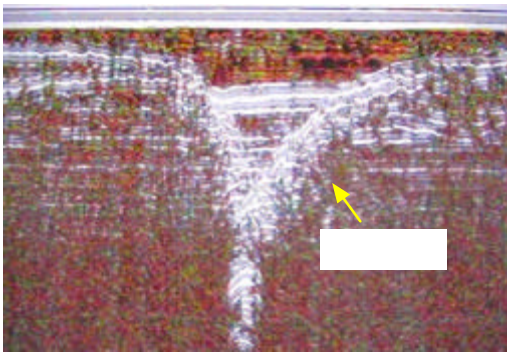
(Image) 가



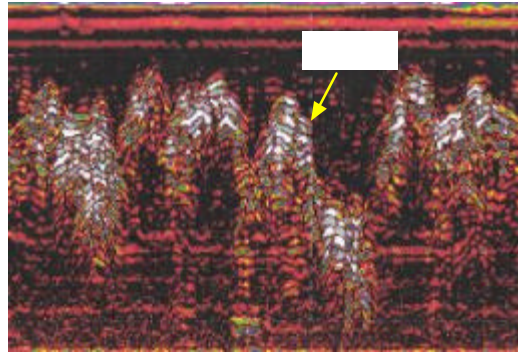
< 6 >



< 7 >



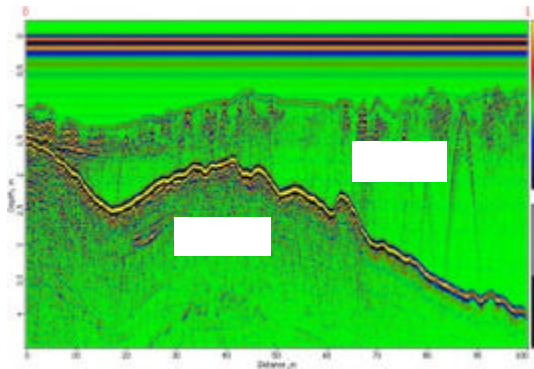
< 8 >



< 9 >



< 10 >



< 11 >